

# **LIVING ENVIRONMENT REVIEW PACKET**

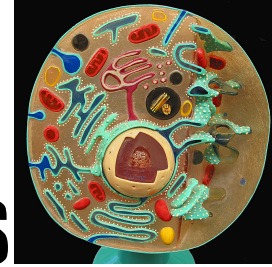
## **FINAL EXAM**

**TUESDAY JUNE 18th 12:00 pm**



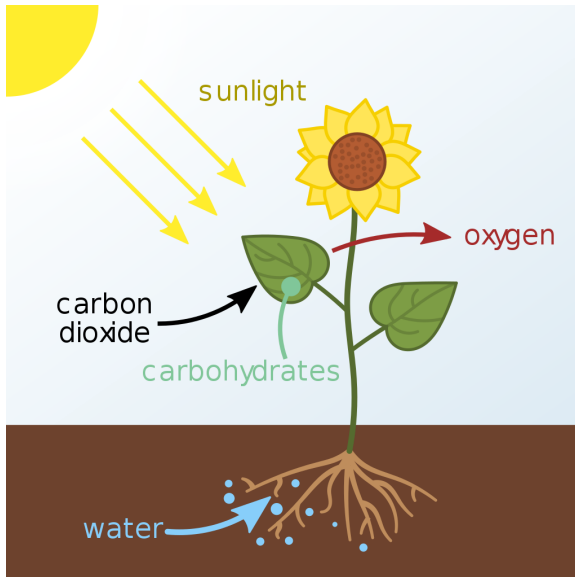
**Bring: 2 pens, 2 pencils, calculator**

# CELL PARTS AND PROCESSES



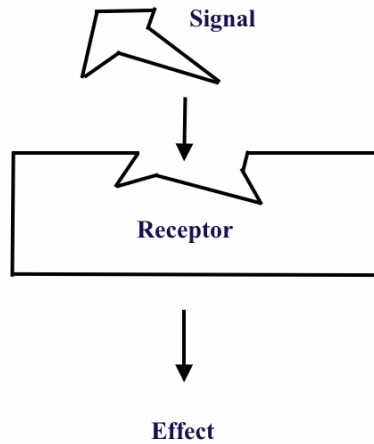
# EQUATIONS:

## RESPIRATION AND PHOTOSYNTHESIS

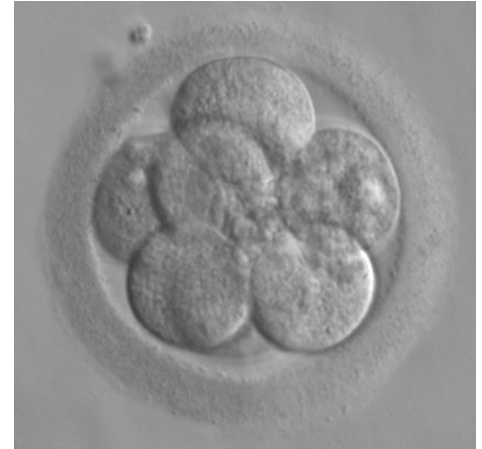


# SHAPES:

## IMMUNITY, ENZYMES AND HORMONES



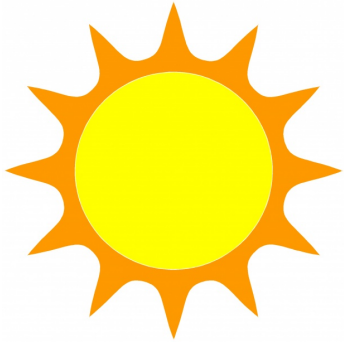
# EMBRYONIC DEVELOPMENT



# GENETIC TECHNOLOGY



# ENERGY PYRAMID



# KEY GRAPHS